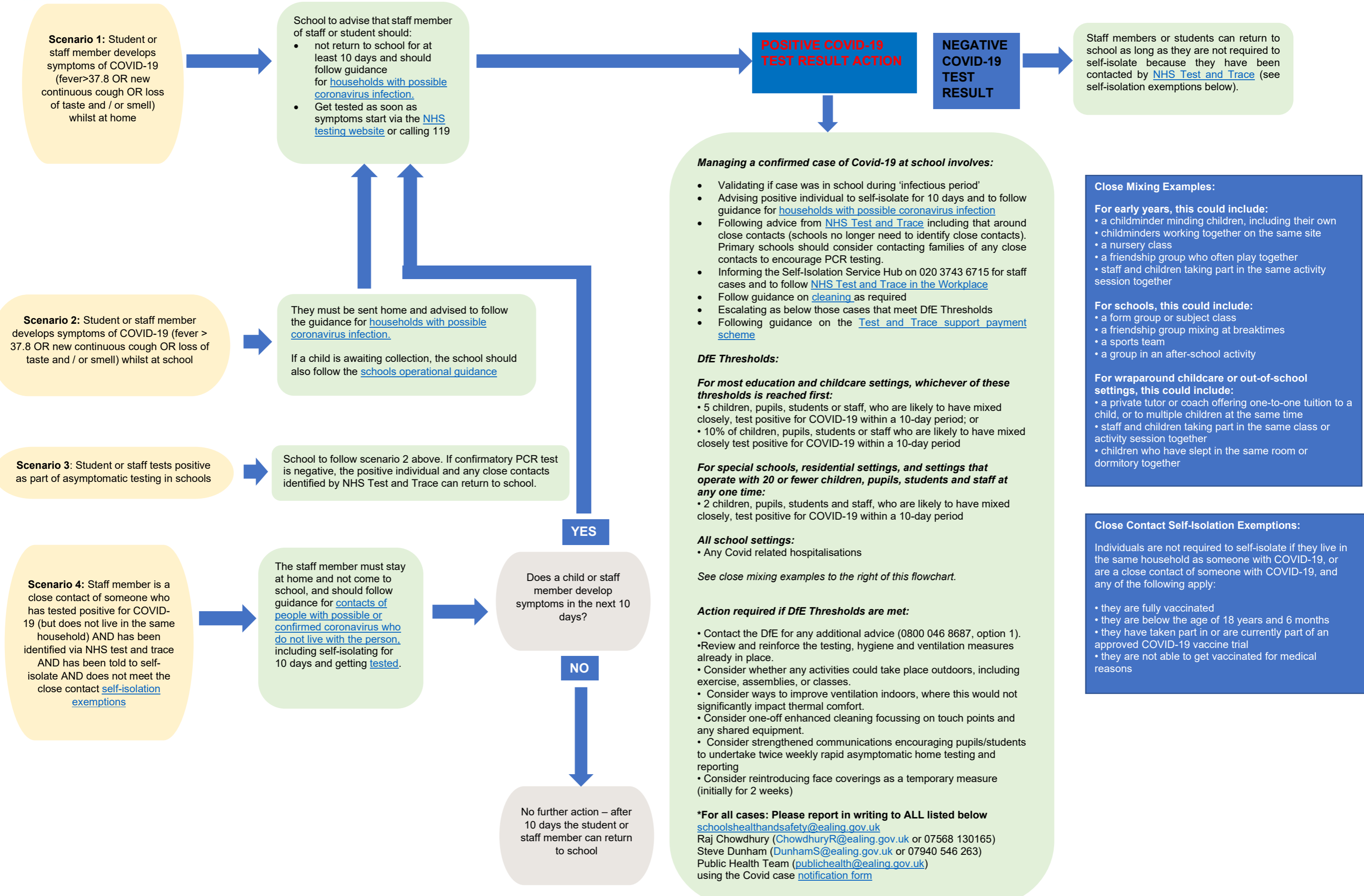


What to do if there is a suspected or confirmed case of COVID-19 in school: Sept 2021



Close Mixing Examples:

For early years, this could include:

- a childminder minding children, including their own
- childminders working together on the same site
- a nursery class
- a friendship group who often play together
- staff and children taking part in the same activity session together

For schools, this could include:

- a form group or subject class
- a friendship group mixing at breaktimes
- a sports team
- a group in an after-school activity

For wraparound childcare or out-of-school settings, this could include:

- a private tutor or coach offering one-to-one tuition to a child, or to multiple children at the same time
- staff and children taking part in the same class or activity session together
- children who have slept in the same room or dormitory together

Close Contact Self-Isolation Exemptions:

Individuals are not required to self-isolate if they live in the same household as someone with COVID-19, or are a close contact of someone with COVID-19, and any of the following apply:

- they are fully vaccinated
- they are below the age of 18 years and 6 months
- they have taken part in or are currently part of an approved COVID-19 vaccine trial
- they are not able to get vaccinated for medical reasons