



ELTHORNE PARK

HIGH SCHOOL

ACHIEVING EXCELLENCE IN A LEARNING COMMUNITY



Message from the Headteacher

I would like to take this opportunity to welcome you all back to Elthorne Park High School for the new school year and to extend a particularly warm welcome to all the families who are new to our school community. I sincerely hope that your children have settled in well and I have greatly enjoyed meeting our new Year 7 and 12 students over the past four days.

In September parents and carers have the opportunity to come into school and meet some of the key people working with your child's year group. Our Year Ahead evenings will take place on the dates outlined on the left hand side of this page and we look forward to meeting as many of you as possible. We will be launching our new Parent & Student app at these evenings and also verifying your contact details so that we can issue your login details to you. We will have more details in next week's newsletter about the organisation of each of the evenings.

Despite the slightly gloomy national picture, at Elthorne we have had our best ever set of GCSE & A-Level results. At post-16, 35% of A level entries were graded A/A*, well above the national average. 22 of our A level students achieved all A grades or higher, while three of our BTEC Level 3 students achieved the highest possible grade, triple distinction star. GCSE results were equally pleasing, with 88% of our Year 11s achieving a grade 4 pass or higher in both English and Maths. I am delighted that so many of last year's Year 11s have decided to stay on in our sixth form.

On Wednesday 13th September we have our open evening from 5:15pm - 8:30pm. **School will close for students at 12:30pm on Wednesday** so that our staff can prepare for open evening. **On Thursday we have a later start to the school day and students should arrive by 9:55am** in readiness for registration at 10:00am. All year groups will have a 10-minute registration period from 10:00 - 10:10am and then go to break (Years 7, 9, 11) or period 2 (Years 8, 10, 12 & 13) at 10:10am.

During the summer break we received two pieces of very sad news affecting our school community. It is with great sadness that I have to inform you that our friend and colleague Terrie Marr, who many of you will have spoken to in the front office, passed away suddenly at the end of August. Terrie had worked at Elthorne for over 20 years and we will miss her terribly. In August we also learnt that one of our ex-students, Finlay Hogg, who left Elthorne in 2019, was killed tragically in a road traffic accident whilst back from university. Our thoughts and deepest sympathy are with his family and friends. He is remembered very fondly by all those who taught him and knew him at Elthorne.

Finally, I would like to thank you all in advance for your support and cooperation this academic year. We are proud of the strong relationships that we have with our students' families and carers and look forward to working closely with you in 2023-2024.

With all good wishes,
Eliot Wong, Headteacher

Inside this issue

- [Message from the Headteacher](#)
- [Start of Year Arrangements](#)
- [Poetry Live Trip](#)
- [Mobile Phone Reminder](#)
- [Attendance & Punctuality Reminders](#)
- [D&T Contribution](#)
- [CIEAG at EPHS](#)
- [News from Key Stage 3](#)
- [News from Key Stage 4](#)
- [News from Key Stage 5](#)
- [Open Evening](#)
- [PTFA Update](#)

Dates For the Diary

Wednesday 13th September
*Open Evening -
 School closes @ 12:30pm*

Thursday 14th September
Late start - School starts @ 10am

Tuesday 19th September
Year 7 Year Ahead Meeting

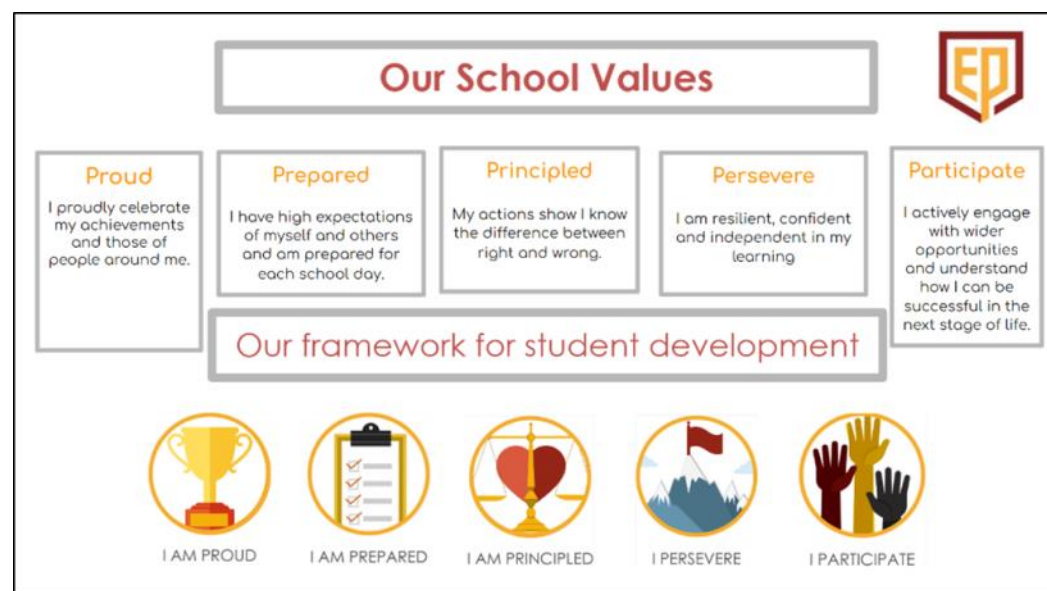
Wednesday 20th September
*Year 12 Year Ahead Meeting
 Year 13 Year Ahead Meeting*

Thursday 21st September
*Year 10 Year Ahead Meeting
 Year 11 Year Ahead Meeting*

Thursday 28th September
*Year 8 Year Ahead Meeting
 Year 9 Year Ahead Meeting*

Start of Year Arrangements

I am writing to inform you of start of Year arrangements and to ask for your support ensuring your child is fully organised and prepared for the new academic year by having correct school uniform and equipment for September. We remind both students and parents of our school values at Elthorne Park High School:



School uniform and equipment for the new school term

The school wants to ensure that the new academic year starts positively with our energies focusing on teaching and learning. We therefore ask you to support the school by ensuring that your child is in full school uniform, fully equipped and punctual to school throughout the new academic year.

School Uniform

Students are required to wear full school uniform to and from school and throughout the school day. In addition, for safeguarding reasons, students must wear their ID card and lanyard throughout the school day. Full details of school uniform requirements and policy are on the [school website](#).

Specific school uniform reminders:

We also ask parent/carers to ensure that their child's uniform meets the standards outlined in the attached uniform policy, in particular please ensure that:

- skirts should be knee length (on the knee) with no frills.
- school jumpers must be worn and brought to school each day.
- plain black tailored uniform style shorts only (knee length). These may be worn in the summer term only.
- hats must only be worn in winter during cold weather and only at break and lunch times. Hats or hoods must not be worn in school buildings or when walking between lessons. Baseball caps are not permitted.
- hooded tops and sports leisure wear is not permitted.
- training shoes are not permitted to be worn in place of shoes.
- make up, painted nails, facial piercings and unnatural hair colouring are not permitted.
- jewellery – a reminder that only small stud earrings are permitted (silver or gold only) limited to one earring in each ear. nose, facial or body piercings are not permitted.
- lanyard and ID cards must be visibly worn throughout the school day.

Student Academic Year 2023 - 2024

Autumn Term 2023

Autumn/1

Tuesday 5th September - Wednesday 18th October

Half-Term

Thursday 19th October - Friday 27th October

Autumn/2

Monday 30th October - Wednesday 20th December

Christmas Holiday

Thursday 21st December - Friday 5th January

Spring Term 2024

Spring/1

Monday 8th January - Friday 9th February

Half-Term

Monday 12th February - Friday 16th February

Spring/2

Monday 19th February - Thursday 28th March

Easter Holiday

Friday 29th March - Friday 12th April

Summer Term 2024

Spring/1

Monday 15th April - Friday 24th May

Half-Term

Monday 27th May - Friday 31st May

Spring/2

Monday 3rd June - Wednesday 24th July

Summer Holiday

Thursday 25th July onwards

Thought of the Week

**"A New Year, a new chapter,
new verse, or just the same old
story? Ultimately we write it.
The choice is ours."**

(Alex Morritt)


Main school uniform items

| Uniform Item | Description | Guidance Note |
|---------------------------------|---|---|
| Jumper* | Burgundy jumper with EPHS logo stitched into jumper. | Must be school issued uniform item with EPHS logo. |
| Shirt* | White shirt with EPHS logo stitched into the collar. | Must be school issued uniform item with EPHS logo. |
| Trousers | Plain black tailored uniform style trousers only. | Jean style, corduroys, lycra or casual trousers with side pockets or rivets are not permitted. |
| Skirt | Plain black school uniform style skirt. Skirts should be knee length (on the knee) with no frills. | Jean style or corduroy skirts are not permitted. |
| Shorts | Plain black tailored uniform style shorts only (knee length). These may be worn in the summer term | Sports shorts are not permitted. <i>This is an optional item of uniform.</i> |
| Socks or tights | Tights must be plain black or neutral grey in colour without patterns. | Students are not permitted to wear tights and socks together. |
| Shoes | Black, polishable shoes or ankle-high boots only. Please ensure that shoes have black laces. | Trainers, cross trainers, boots (apart from ankle length boots), high heels, platform shoes or open shoes are not permitted. |
| Outdoor coat/ jacket | Coats must be waterproof, dark in colour and without logos. (unless an EPHS logo) | Coats must not be used as a substitute for the school jumper. Students must bring a warm and waterproof coat to school during poor weather. |
| Reversible fleece coat* | A reversible waterproof school fleece coat with EPHS logo can be purchased through the school uniform shop. | <i>This is an optional item of uniform.</i> Cotton hooded tops are not permitted in school. |

Students are required to wear full school uniform to and from school and throughout the school day. Tutors, supported by pastoral Leaders, will be carrying out uniform and equipment checks on the first day of term.


Equipment

We ask you to ensure that your child has full equipment in a sturdy pencil case. Please see the equipment list to the right. Please ensure that any lost or missing equipment is replaced for the start of term.



Equipment for learning

Students are required to have the following equipment



- Two blue or black pens for writing
- Green pen to act on feedback
- Two plain HB pencils
- Ruler – 30cm
- Sharpener
- Rubber
- Colour pencil set, preferred to felt tip pens.
- Glue stick and small blunt ended scissors
- Pair of compasses
- Protractor
- Calculator (Casio FX85GTX or FX991EX)
- Mini-white board pen
- Highlighter pen(s)
- Reading book
- Sturdy A4 wallet folder (plastic or card) to hold work

I AM PREPARED

Poetry Live Trip for all Year 10 students (2023/2024)

The English Department would like to take all of our new Year 10 students to Poetry Live at the Dominion Theatre, London, on **Friday 24th November**. Students are examined on the AQA Poetry Anthology as part of their GCSE course and several of the poets they are currently studying will be attending the event to speak about their work. This event will allow students to better engage with their exam content. **Parents will need to pay £18.80 via ParentPay by Monday 18th September 2023**. ParentPay will be open at the beginning of the Autumn Term 2023 in order for the payment of tickets to be made. Students who are on Pupil Premium Register will have the cost of the ticket paid for them.

Ms Dhami, Faculty Leader - English

Mobile Phones

A reminder that we do not allow students to have mobile phones out during the school day. If a student has a mobile phone, it must be switched off and in their bag. We are an anti-bullying school and will not tolerate unkindness over social media. We will continue to support students regularly with eSafety and bullying through assemblies, tutor activities and our PSHCE programme where students are encouraged to explore this topic through activities and discussion. We kindly request that parents are monitoring their child's device throughout the school year and support us with this message.

Mr White, Deputy Headteacher

Attendance and Punctuality

Well done to all students with excellent attendance this year and also to those students who have tried hard to improve their attendance throughout the academic year! Regular attendance and good punctuality encourages responsible learning habits and prepares children for higher education and for their working life. We ask parents to ensure children attend school on each day the school is open for the pupils unless there is an 'authorisable' reason to be absent. Only the school can authorise an absence. If your child is unwell, please phone or email the school (attendance@ephs.ealing.sch.uk) on each day of absence, with a reason for absence.

The school target for attendance is 96%. To put this in context, if your child falls below this target and has attendance of 95%, they will miss 10 days of school in a year, that is 2 full school weeks of your child's learning missed for that year.

Attendance last year: (2022/2023)

| Year 7 | Year 8 | Year 9 | Year 10 | Year 11 | Year 12 | Year 13 |
|--------|--------|--------|---------|---------|---------|---------|
| 95.3% | 94.5% | 92.9% | 93.9% | 91.4% | 90.8% | 90.0% |

Students should leave home with plenty of time to get to school on time. To put this in context, arriving 5 minutes late every day adds up to over 3 days lost each year. Lunchtime detentions are set when students arrive at school after 8:45 am. Parents/carers of students who are late to school in the morning will receive an email on each day that they are late in order to give parents the information they need to support their child more effectively to make the most of each school day.

Please note that authorised Medical and Dental appointments do count as absence on your child's record, although won't result in a late detention if the school has been informed with notice. You can support your child to improve their attendance by organising (where possible) all non-emergency medical/dental appointments outside of school hours.

Request for holidays during term time

Unfortunately, we are unable to authorise holidays during term time. We understand that emergency situations may arise and if you wish to request a holiday due to an exceptional circumstance you should make a request to the Headteacher using the 'Request for leave during term time' form here. The local authority may choose to issue a fine for unauthorised holidays taken during term time.

Mr Laryea, Assistant Headteacher

Design Technology Contribution

As you will be aware, all pupils in years 7, 8 and 9 study several Design Technology areas (resistant materials, textiles, graphic design and electronics). In many schools, pupils are required to supply their own materials, fabric and components for DT lessons but at EPHS we appreciate that this system can be both time consuming and expensive for parents. Therefore, it is our policy to ask for a contribution of **£8 per academic year from every pupil in KS3**. The contributions will be used to subsidise the cost of supplying materials for DT practical lessons as well as supplying prizes for our 'Designer of the Month' award. This system has the additional advantage of allowing us to take advantage of discounts given for bulk ordering.

In light of the above, I would be most grateful if you could submit your contribution of **£8 via ParentPay by the end of this half term**. Please note that for reasons of health and safety pupils are required to supply their own ingredients for Food and Nutrition/Food Science and they should bring a suitable container to practical lessons so that they can take their work home.

If you have any questions regarding this or any other matter, please contact me by email (rshort@ephs.ealing.sch.uk). I would like to thank you for your support with this and look forward to working with your child during the next academic year.

Rosie Short, Faculty Leader - Art & Design Technology

CIEAG – Careers Information, Education, Advice and Guidance at EPHS

Elthorne Park High School is committed to offering our students high quality career learning opportunities. These are provided through a programme of internal careers education and externally provided independent and impartial careers information, advice and guidance (IAG). CIEAG is also an integral part of the curriculum and contributes to the ongoing drive to raise aspirations, develop key employability skills and illustrate the relevance of subject studies to later life. You can find out more information about our CIEAG provision and a range of useful resources on the school's website: <https://www.ephs.ealing.sch.uk/careers>. As part of our commitment to developing our programme, the [CIEAG policy](#) and [Provider Access Statement](#) are reviewed annually. We welcome feedback on these policies from staff and parents ahead of their GB consultation on 26th September. Please email any responses to Ms A Crix (Assistant Head): acrix@ephs.ealing.sch.uk.

We are also excited to announce that the school's new CIEAG partner is Unifrog. All students will have the opportunity to use the careers library provided through Unifrog as well as being able to keep a detailed record of their personal achievements and experiences across all key stages. You will find out more about how Unifrog can support your child at the year ahead evening. If you would like to access the platform earlier – [please feel free by clicking this link!](#)

You will need to sign up using the code EPHSParents which will prompt you to create an account. There is a wealth of information and guidance for parents here with everything from apprenticeship webinars to career profiles.

Ms Crix, Assistant Headteacher

News from Key Stage 3:

Year 9

We have been delighted to welcome back the students this week and impressed with their levels of maturity and participation in lessons. Students were welcomed back with an assembly on our behaviour expectations by Mr Laryea. Students are wearing their uniform with pride ensuring they are wearing their lanyards at all times, wearing black polishable shoes and a logo branded school shirt underneath their jumper (even with the scorching temperatures.)

We look forward to working together in partnership as students begin their GCSE journey in some subjects. Please speak to your child and look in their new books to see the content they will be covering in their subjects this year.

Mr Sykes and the Year 9 Team

News from Key Stage 4:**Year 10**

It has been fantastic to welcome all of our year 10 community back to school this week and we have been impressed with the way in which they have presented themselves throughout their first week back. They have returned prepared and ready for the next chapter of their EPHS journey - GCSEs! We have watched in awe as they have really thrown themselves into their new and existing subjects. Uniform in particular has also been a highlight with everyone looking super smart and ready to learn. Just a reminder that nose piercings are not permitted as stated in the school uniform policy and students will be required to remove them. Please also ensure that your child's parent pay account has adequate funds available as we continue to be a cashless system.

A reminder that Wednesday 13th September is our open evening. Students will be dismissed early at 12.30pm that day to allow for preparations across the school.

Many thanks for your ongoing support and here's to another excellent school year.

Ms Maddox and the Year 10 Team

Year 11

We were pleased to welcome back our students this week for the start of Year 11, and it was great to see so many smiles on their faces as they came through the gates on Tuesday. It's hard to believe we have already reached this stage of their school career! As I said to the year group in our assembly, we want them to hit the ground running as the months will quickly pass and GCSE exams will come round sooner than we think. Fortunately students seem to have taken that on board and have made a positive start to the academic year.

As always we have been reminding students of our expectations for learning, punctuality, attendance, behaviour and uniform. We have spoken with a number of students regarding their uniform, and are expecting all issues to be resolved by Monday. Please assist us in making sure students are fully prepared in line with the school uniform policy.

We have a number of events this half-term, details of which can be found in this newsletter. While you may not be joining us for Open Evening next week, we hope to see you at the Year Ahead Evening, Exam Workshop and Sixth Form Open Evening. After the October half-term break we will also be starting the first round of Year 11 PPE's so encourage students to begin creating a revision plan as soon as possible.

Mr Simmonds and the Year 11 Team

News from Key Stage 5:**Year 12**

I am delighted to welcome our year 12 students to EPHS and am really pleased with how they are managing their transition. New subjects, a different format to the day and increased independence are many of the positive things about being a sixth form student. However, this does make school feel quite different and may need a little time to get used to. If you feel your child is a little overwhelmed, please do let myself and the year team know.

I am looking forward to working with the students and yourselves over the next two years to ensure they achieve their potential and are ready for the next stages of their lives. I look forward to meeting many of you at the Year Ahead Meeting.

Best wishes,

Ms Trueman and the Year 12 Team

Year 13

It has been wonderful to see the return of our wonderful Year 13s. We have a busy 9 months to go. In the next few months we will be sending off UCAS applications, discussing apprenticeships, degree apprenticeships and entering the world of work. Students have a couple of months to prepare for their PPEs which will be an ideal way to help them prepare for their actual exams taking place next year. The Year 13 team will be here to guide all students/parents/carers so please do get in contact if you need anything.

This year we welcome Ms Harvey and Mr Meredith to our team who will be our UCAS experts! I look forward to seeing you all at the Year Ahead Evening,

Mrs MacDonald and the Year 13 Team

Open Evening

Wednesday 13th September 2023

Our Open Evening for prospective parents will take place on Wednesday 13th September from 5:15pm to 8:30pm.

The Headteacher's presentation to parents will be ticketed and will be at 5.30pm, 6.45pm and 7.45pm.

(Details on how to access tickets can be found on the school's website.)

'Our staff and students look forward to meeting you at our Open Evening event.'

The Headteacher will be running additional presentations for parents unable to secure tickets for the main Open Evening. These will take place on:

Thursday 14th, Friday 15th, and Monday 18th September at 3:45pm

Parents are asked to arrive at the main reception on Westlea Road at 3:40pm.

(Details on how to access tickets can be found on the schools main website.)

'We hope that you and your child will enjoy your visit to Elthorne Park High School.'

You are also welcome to post questions on our FAQ page on the website where we will add responses.



Elthorne Park High School
Westlea Road, Hanwell, W7 2AH
Tel: 020 8566 1166
www.ephs.ealing.sch.uk



'Achieving excellence in a learning community.'



Join us on the Thames Path Challenge and help us raise much needed funds to support emotional wellbeing in our school!

Thames Path Challenge - 9th/10th September 2023

The Schools Counselling Partnership (SCP) are looking for people to join a team for this year's Thames Path Challenge 2023. As I am sure you are aware the pressure on mental health services is huge with waiting lists for CAMHS (Child and Adolescent Mental Health Service) reaching 18-24 months and adult mental health services equally stretched.

The Schools Counselling Partnership offers therapeutic support for our whole school community - children, young people, parents, carers and teaching staff. They work in our school along with 45 other schools across London, predominantly in Ealing and Harrow. With rising costs and no real terms increase in school budgets some very difficult decisions are having to be made about what we pay for and this may jeopardise future service provision. Schools Counselling Partnership are trying to raise fund to ensure this much needed provision remains in our school.

Evidence shows that exercise, connection to others and giving back hugely improves your overall wellbeing and combats anxiety and stress. Participating in an event like the Thames Path Challenge ticks many of these boxes. This year's event takes place on Saturday 9th and Sunday 10th September starting at Fulham Palace you can choose to walk, jog or run 25km (to Hampton Court), 50km to Runnymede or the full 100km to Henley. **Why not set yourself a challenge and take part!**

In return for your participation and fundraising efforts on their behalf **SCP will pay your registration fees** which include refreshments throughout the day, your t-shirts/bib for the day. If you would like to join them please contact Toni Medcalf, Schools Counselling Partnership, info@schoolsounsellingpartnership.co.uk. Full details for the event can be found at [Thames Path Challenge - Ultra Challenge](#)

Ms Hanafi, Schools Counselling Partnership

PTFA Update - Ealing Half Marathon

Any EPHS parents running this year's Ealing Half Marathon? Before Covid we had a wonderful Elthorne Team run for the school, raising an incredible £1500. If you've signed up to run already, or are thinking about it, and would like to fundraise for EPHS, please let us know. We already have 2 keen runners! We'll set up the JustGiving page for you to share with friends and family and will be there to cheer you on. This also applies to any Mini Milers! Email us: elthorneptfa@gmail.com



SUPPORT OUR LOTTERY TODAY

£1 per week

Weekly cash prizes

£25,000 jackpot

YOUR SCHOOL LOTTERY

£1 TICKET 4 WEEKS

Splitting the £1.00

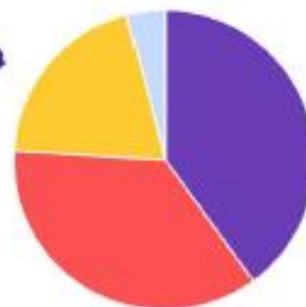
How it works...

It's simple—choose 6 numbers between 0-9 and if they match the weekly lottery draw, you win great prizes. One of our players will win a cash prize every week, maybe even the £25k jackpot! Tickets cost just £1 per week and the proceeds are donated to Elthorne Park High School

Every Saturday at 8pm the numbers are drawn and posted online. Winners are notified by email and winnings paid into the account of your choice.

The easiest way to join our lottery is online at YourSchoolLottery.co.uk by direct debit or debit card.

It's so easy to join and will make a real difference to Elthorne Park High School



- 40p goes to our school
- 36p goes to cash prizes
- 20p goes to admin costs
- 4p goes to VAT

The Maths... 100 tickets sold a week means

- = £30 weekly cash prize
- = £2,080 a year for our school

To start supporting, visit:
yourschoollottery.co.uk
 and search for: Elthorne Park

Supporters must be 16 years of age or older

