



ELTHORNE PARK

— HIGH SCHOOL —

Sixth Form Open Evening

Tuesday 17th October 2023



Eliot Wong
Headteacher

Summary Statistics - Sixth Form



KS5 Attainment 2023 · Actual results

126 pupils

Average Points Score (A-level)

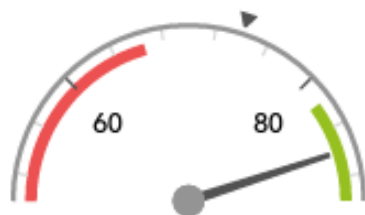
39.3 pts+



Significantly above the national average (34.3) ◀

%A*-C (A-level)

86%+



Significantly above the national average (74%) ◀

KS5 Progress 2023 · Value Added

126 matched pupils

Average Points Score (A-level)

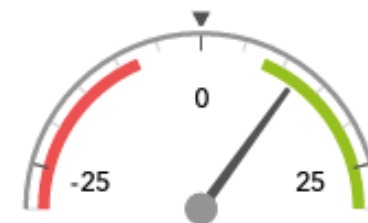
+5.2 pts+



Significantly above the national average (0) ◀

%A*-C (A-level)

+12%+



Significantly above the national average (0%) ◀

Summary Statistics - Sixth Form



BTECs

Prior GCSE 5+ >> average grade **Distinction+** (100% D*-M)

A levels

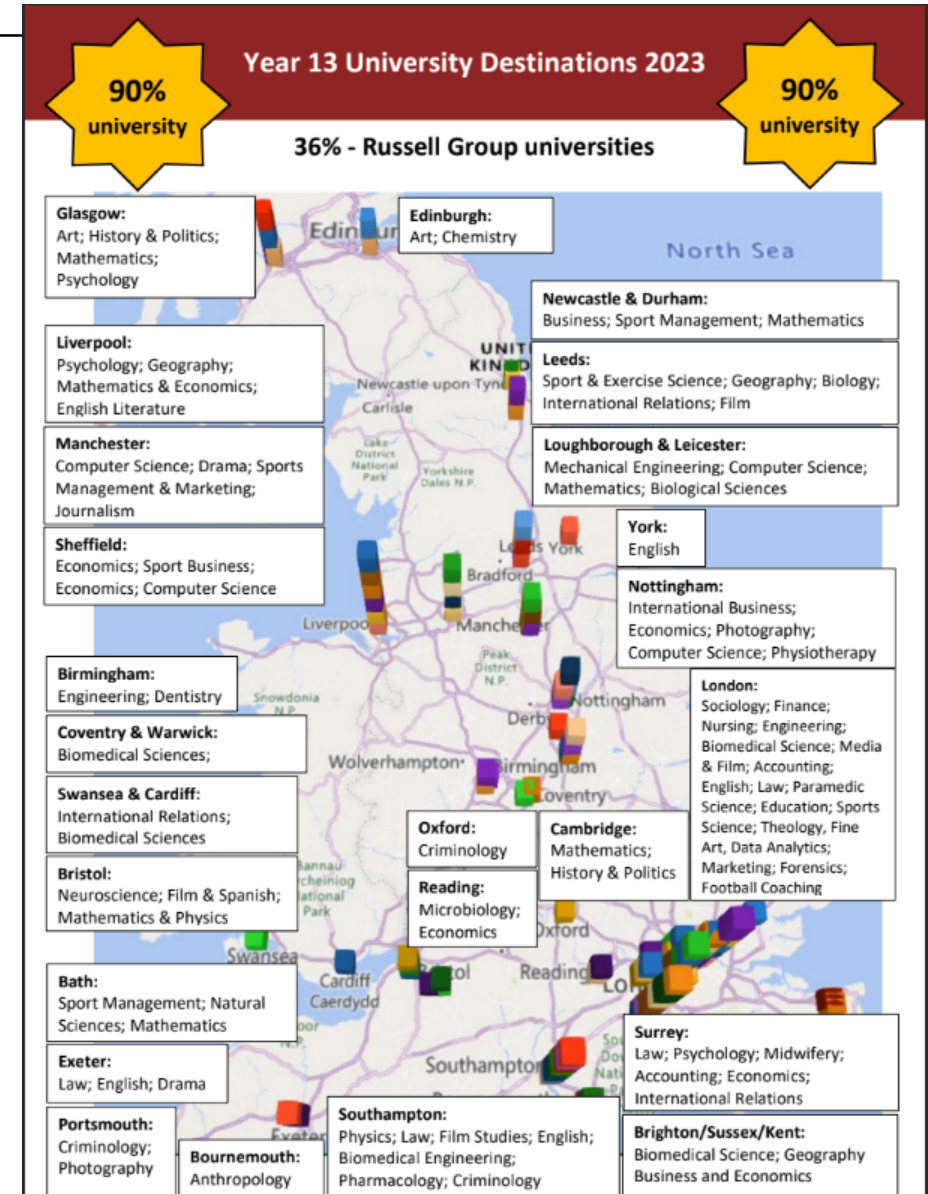
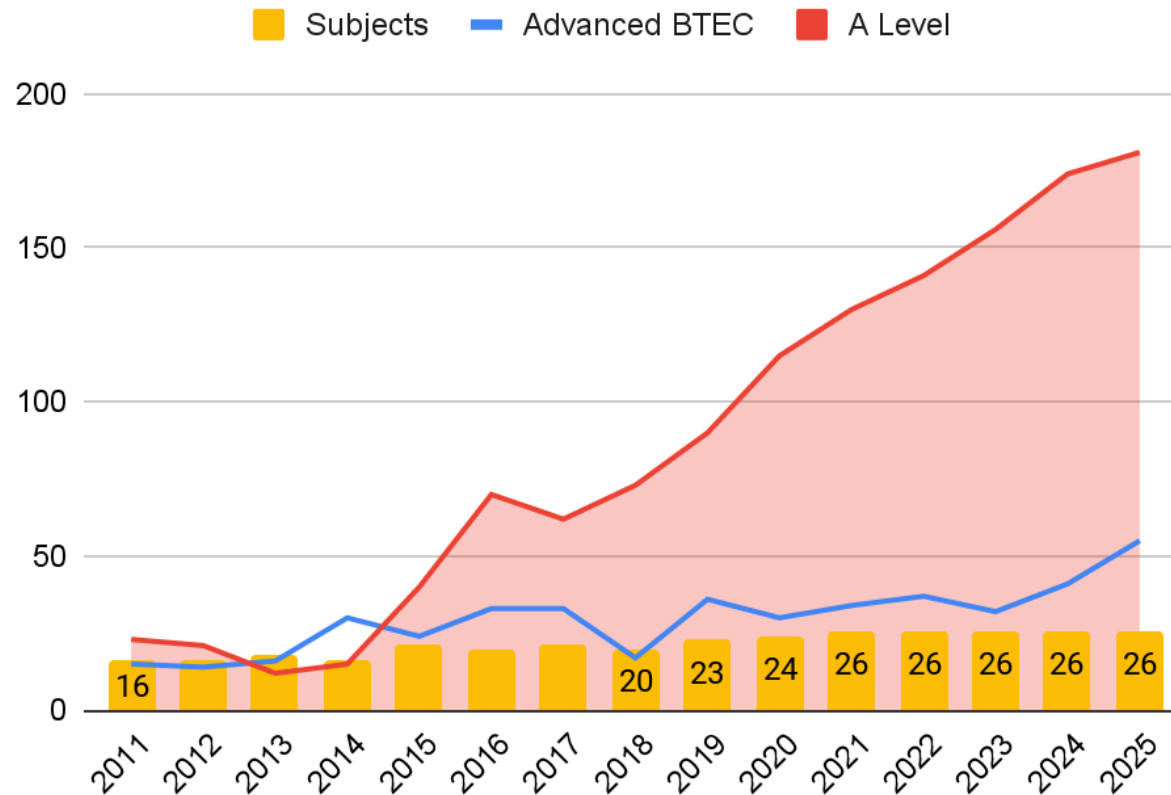
Prior GCSE 6 >> average grade **C** (49% A*-B)

Prior GCSE 7+ >> average grade **A** (93% A*-B)

2022 or 2023 ALPS Excellent+ Computer science, Drama, Fine Art, Photography, Economics, English Lit, Film Studies, French, German, History, Mathematics, PE, Psychology, RS, Sociology, Spanish, Health & Social Care, Sport, Overall A level subjects

A growing sixth form

Number of Year 13 Students and Subjects studied



New 6F building



New 6F building



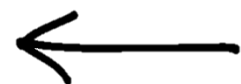


Steve Ward

Deputy Headteacher, Quality of Education

A culture of excellence





REACTIVE & PROACTIVE



50% REACTIVE =

Work set by the teacher (HW)

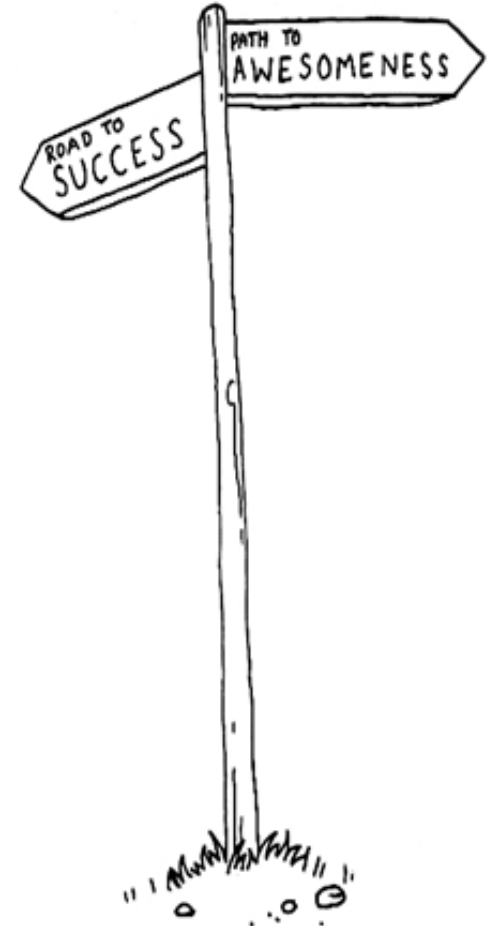
50% PROACTIVE =

Work set by the students themselves (super-curricular study, wider reading, additional research)

Teaching & Learning



- Teachers' subject knowledge
- Teaching in the classroom: The Elthorne Way
- Engagement
- Thinking hard
- Recall
- Adaptive teaching
- Stretch & challenge ("Challenge Plus")



Post-16 Pathways



Elthorne Extended Pathway

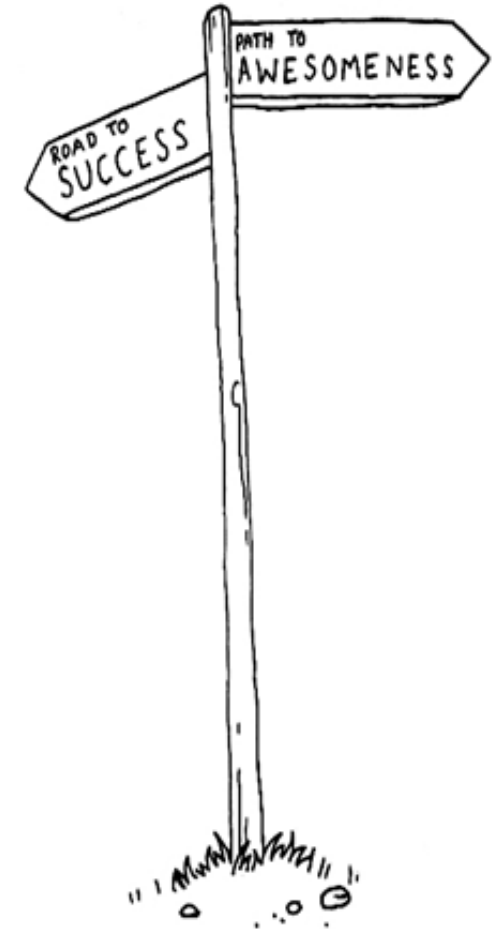
Students on this pathway will study 4 A level courses and the Extended Project Qualification (EPQ)

Academic pathway

Students on this pathway will study 3 A level courses with the option of taking the EPQ

Applied Technical Pathway

Students on this pathway will take one Level 3 Extended Diploma (equivalent to 3 A levels)



A broad curriculum



BTEC Sport
BTEC Health & Social Care
BTEC Business

Extended Project Qualification (EPQ, equivalent to half an A level)
--

A Level Art: Fine Art
A Level Art: Graphics
A Level Art: Photography
A Level Biology
A Level Chemistry
A Level Computer Science
A Level Economics
A Level English Literature
A Level Drama & Theatre Studies
A Level Film Studies
A Level French

A Level Geography
A Level German
A Level History
A Level Mathematics
A Level Mathematics (Further)
A Level Religious Studies
A Level Physical Education
A Level Physics
A level Politics
A Level Psychology
A Level Sociology
A Level Spanish

Entry requirements: Academic pathway



Academic pathway

Students on this pathway will study 3 A level courses with the option of taking the EPQ

- **5 GCSE qualifications (or equivalent) at grade 9-5**
- **Will include English and Maths at grades 9-5**
- **Grade 6 in the subject that you would like to study (Politics, RS and Sociology require a grade 5 in English)**

A Level Art: Fine Art
A Level Art: Graphics
A Level Art: Photography
A Level Biology
A Level Chemistry
A Level Computer Science
A Level Economics
A Level English Literature
A Level Drama & Th. Stud.
A Level Film Studies
A Level French

A Level Geography
A Level German
A level Government & Politics
A Level History
A Level Mathematics
A Level Mathematics (Further)
A Level Religious Studies
A Level Physical Education
A Level Physics
A Level Psychology
A Level Sociology
A Level Spanish

Entry requirements: Elthorne Extended Pathway



Elthorne Extended Pathway

Students on this pathway will study 4 A level courses and the Extended Project Qualification (EPQ)

- Recommended that students have 5 grades 7-9 including English and maths at 7-9
- Grade 6 in the subject that you would like to study (5 in government & politics, sociology and RS)

A Level Art: Fine Art

A Level Art: Graphics

A Level Art: Photography

A Level Biology

A Level Chemistry

A Level Computer Science

A Level Economics

A Level English Literature

A Level Drama & Th. Stud.

A Level Film Studies

A Level French

A Level Geography

A Level German

A level Government & Politics

A Level History

A Level Mathematics

A Level Mathematics (Further)

A Level Religious Studies

A Level Physical Education

A Level Physics

A Level Psychology

A Level Sociology

A Level Spanish

Entry requirements: Applied Technical pathway



Applied Technical Pathway

Students on this pathway will take one Level 3 Extended Diploma (equivalent to 3 A levels)

BTEC Sport

BTEC Health & Social Care

BTEC Business

- 5 GCSE qualifications (or equivalent) at grade 9-4



<https://www.brentfordfcst.com/product/post-16-football-education-programme-boys-oct-trials-23/>

Post 16 Football & Education Programme – Boys October Trial Registration

£0.00

Want the opportunity to develop your footballing skills and play competitive matches whilst studying? With our Post 16 boys football and education programme, you can do just that.

Train under our highly qualified coaches at our state-of-the-art facility at the new Gunnersbury Park Sports Hub and play matches in the EFL's prestigious Community & Education Football Alliance competition.

Study A-levels or a BTEC, with Gumley School, William Perkin, Elthorne Park High School, Uxbridge High School, Chiswick School or West Thames College.

Trial Details:

Date – Tuesday 24th October 2023

Times –

PM Trials – 16:00pm to 18:00pm

Location – Gunnersbury Park Sports Hub – Popes Ln, London W3 8LQ

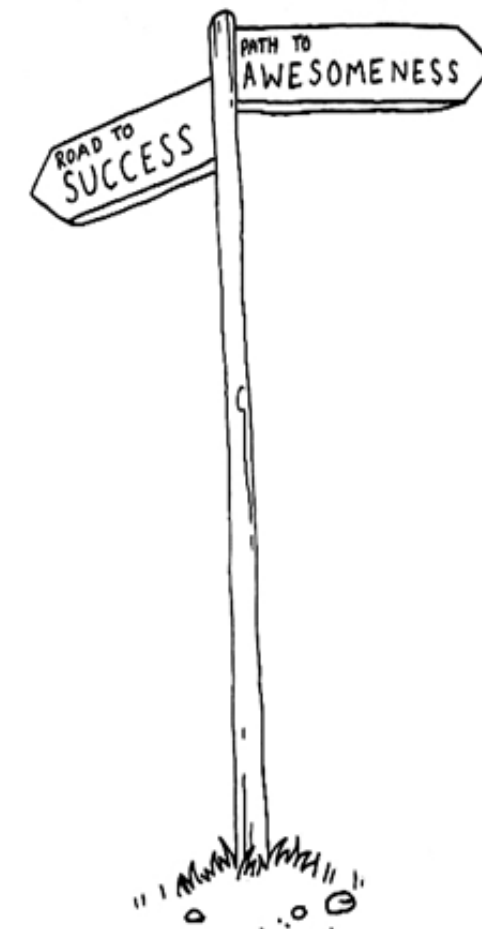
Please contact jokimo@brentfordfcst.com in case you have any further questions.

Timetable Blocks 2024-25



Sample blocks:

Block 1	Block 2	Block 3	Block 4
Art: Fine Art	Biology	Mathematics (Further)	
Art: Graphics	Chemistry	Biology	Chemistry
Art: Photography	Computer Science	English Literature	Drama
Mathematics	English Literature	French	Economics
Physical Education	Film Studies	German	Geography
Physics	Mathematics	Politics	Physics
Sociology	Psychology	History	Psychology
Spanish	Sociology		Religious Studies



What do we look for in an application to our Sixth Form?



- Do you meet our academic entry requirements?
- Do you share our school values?



For each successful candidate we would expect to see:

- A positive attitude towards learning, both inside and outside lessons. Year 11 reports will show that there are no serious concerns about attitude to learning or home learning.
- A record of good conduct in school (internal students with a high number of behaviour points from Year 11 or any fixed-term exclusions from Year 11 are very unlikely to be offered a place). External applicants will be required to submit a reference showing a good record of conduct in their own school.
- A record of good attendance and punctuality.



Next steps: Enrolment timeline

Internal applications: **Friday 8th Dec 2023 - Friday 9th Feb 2024**

- Sixth Form Taster Day: **Friday 19th January 2024**
- Next Steps Meetings: **Monday 22nd January - Friday 2nd February 2024**
- Internal offers round 1: **End of Spring Term 2**
- Internal offers round 2: **End of Summer Term 1**

External applications open: **Wednesday 18th October - Wednesday 6th December**
(link on website, open from end of open evening)

- Early offers and invitations to meet in January 2024
- IAG meetings to determine course suitability in February 2024
- Keeping in touch sessions March 2024

Induction Day: **Tuesday 25th June 2024** (for internal and external candidates who have received an offer of a place)

- Internal students whose predicted grades do not allow them to apply for their preferred course(s) can inform us of their desired combination of subjects in Section 5 of their application
- External students whose predicted grades do not allow them to apply for their preferred course(s) should contact admissions@ephs.ealing.sch.uk



Camella Ervin

Director of Sixth Form



***An ambitious Sixth Form,
that looks after the whole
individual***

Sixth Form Leadership Team



Head Students: Ben Brandwood-Fiander and Hidaya Kharas



Deputy Head Students: KS5 - Lara Keenan and Avneet Sahni

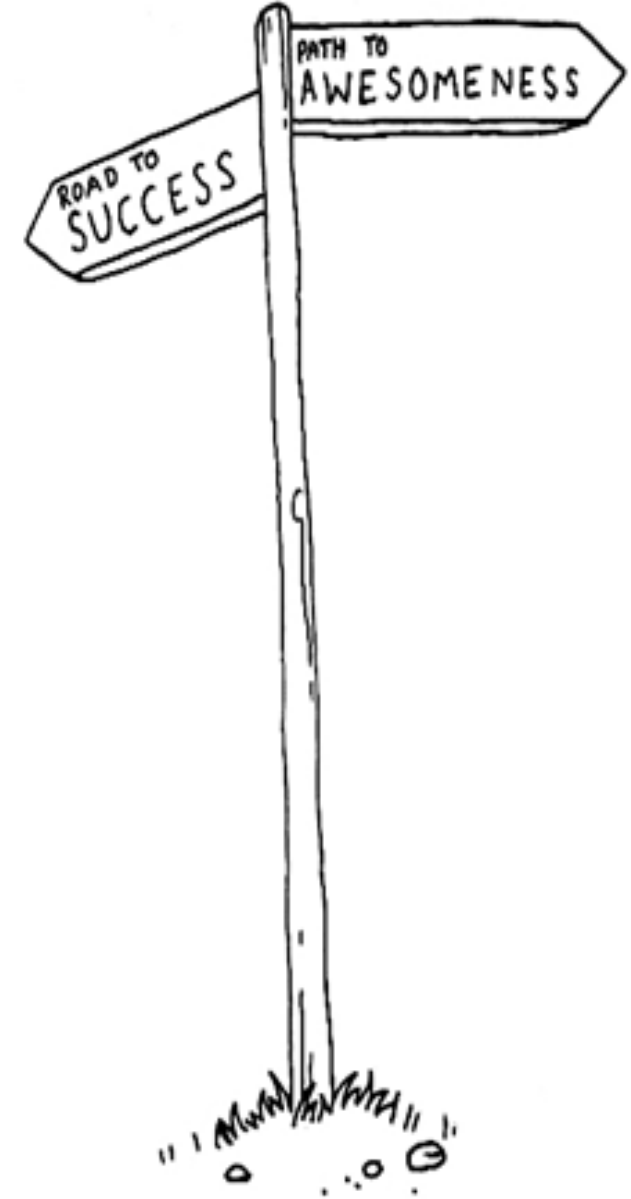
Deputy Head Students: KS4 - Hadiqa Tahir and Joe Healy

Deputy Head Students: KS3 - Jackson Doyle and Tahani Mohamed

Post-16 challenges



- Linear courses (A Level)
- Single submission and external assessment (BTEC)
- Greater depth of study
- More freedom and responsibility around the school
- Post-18 options



Pastoral Support in reintegrating to Sixth Form



- Regular **mental health** sessions
- Access to non-teaching **Pastoral Support Worker**
- **Mentoring** - managing anxiety, organisation, choices
- Regular **tutor feedback** with home - phone calls/emails
- Ms Ervin - *Designated Safeguarding Lead for Sixth Form*, management of higher level need & mental health concerns

How to support academic study?

In addition to student study of their A-level/ BTEC courses, students will also focus on the following:

- EPQ - fortnightly taught skills
- PSHCE - weekly sessions
- Enrichment - fortnightly sessions
- Super-curricular activities
- Elthorne Service
- Extra-curricular activities

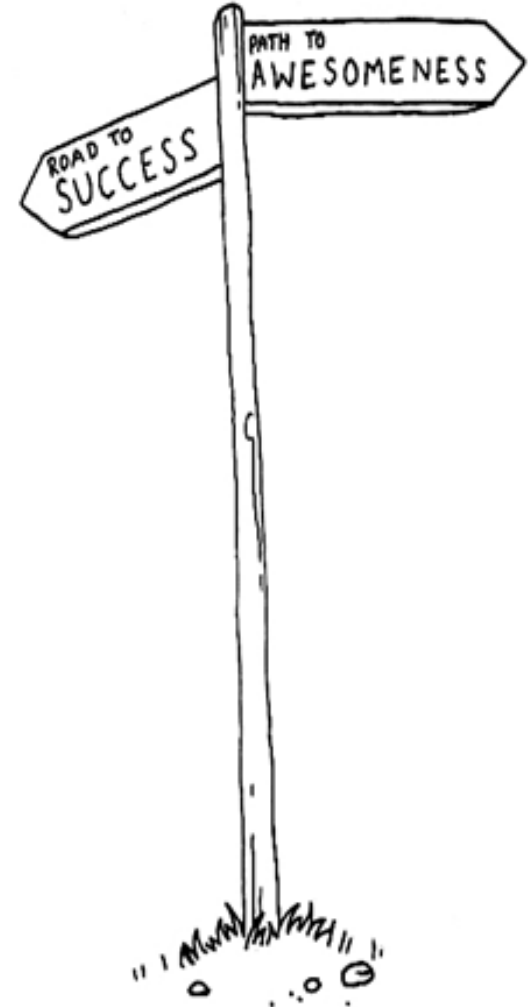


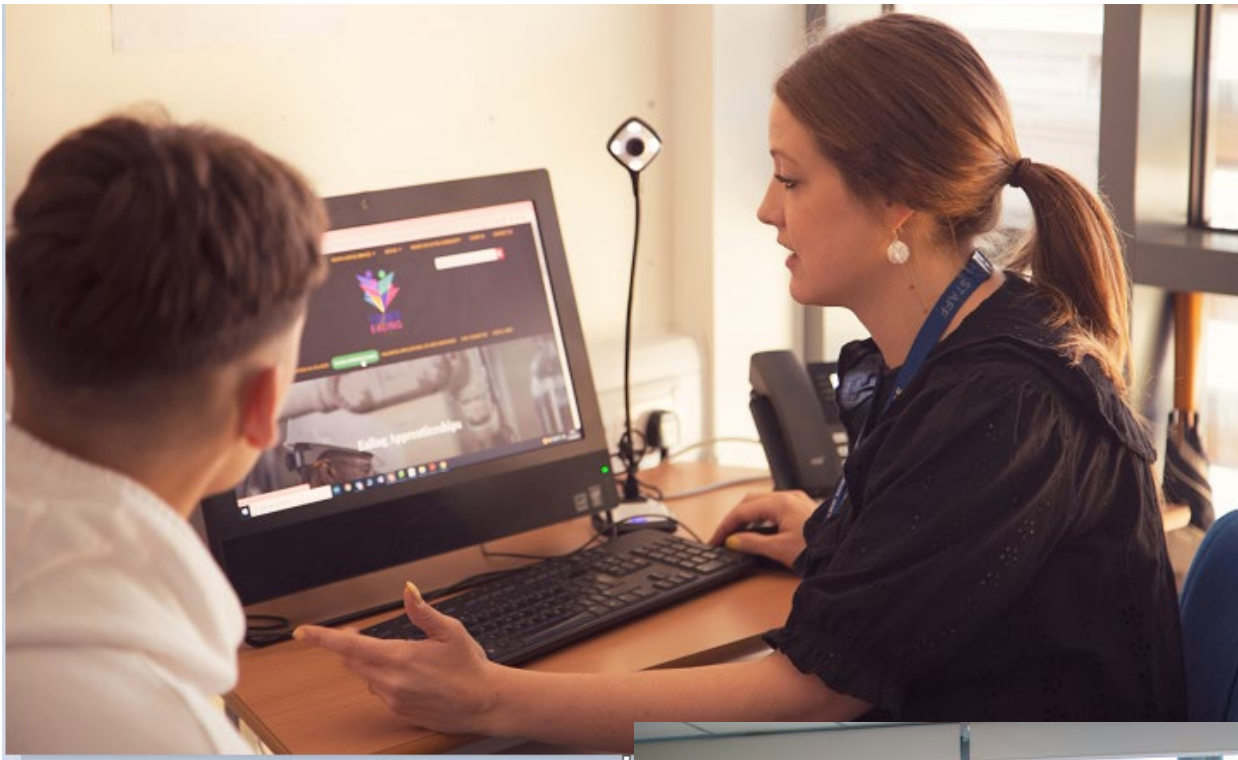
Tutor Sessions



Every Sixth Form student has a tutor who guides them through their journey with us.

- Organisation & time management
- Revision skills
- Personal Development sessions
- CIEAG support and guidance
- Mental health awareness
- Super-curricular & Extra-curricular





Applications and UCAS



- Tutors and the Sixth Form team will support students through starting to think about their post-18 options
- Students will be allocated an individual mentor from the Sixth Form and Senior Leadership teams
- By the end of summer term of Year 12 all students should have completed a draft of a personal statement.
- All students submit their UCAS application by December
- University is not the only route:
 - L6 and 7 Apprenticeships
 - Further education courses
 - Employment

2023 - Destinations



Cambridge:
Maths

Cambridge:
History &
Politics

Edinburgh:
Art

Duke University:
Psychology

Birmingham:
Dentistry

Bristol:
Neuroscience

Exeter:
Law

York:
English

Southampton:
Pharmacology

Southampton:
Biomedical
Engineering

Bath:
Sports
Management

Sheffield:
Economics

UCFB Manchester:
Sports coaching

Surrey: Midwifery

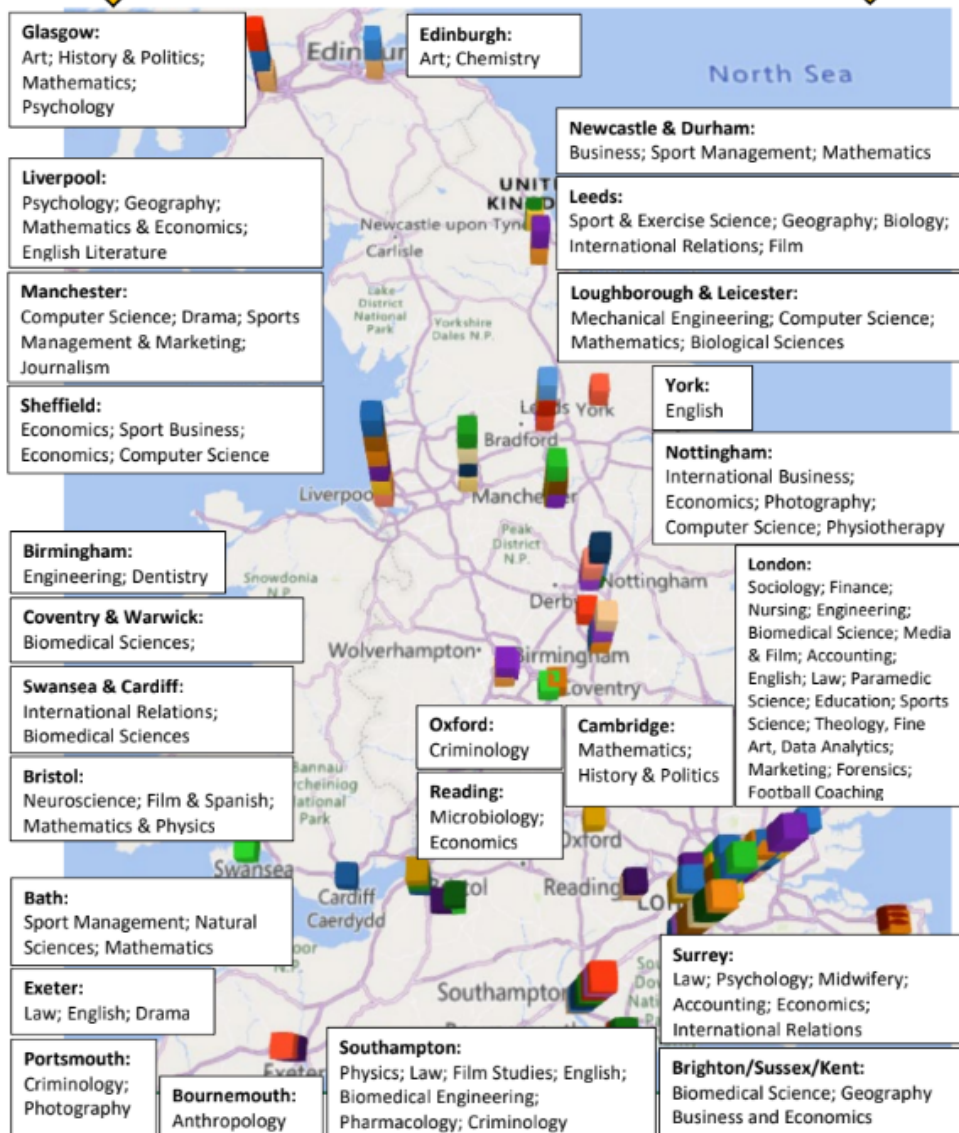
Durham:
Maths

90%
university

Year 13 University Destinations 2023

90%
university

36% - Russell Group universities





Apprenticeships

GSK

PwC

Pilot School

Nursing & Midwifery

Pharmacy
Technician

Beauty &
Cosmetics

Fashion
Photography

London Football
Association

Met Police

Coaching
(Sport)

Journalism

Nursery & Childcare
Apprenticeship

